

JH Solar

The energy storage principle of flywheel battery is



Overview

Flywheel energy storage (FES) works by accelerating a rotor (flywheel) to a very high speed and maintaining the energy in the system as rotational energy. When energy is extracted from the system, the flywheel's rotational speed is reduced as a consequence of the principle of conservation of energy; adding energy to the system correspondingly results in an increase in the speed. Main components A typical system consists of a flywheel supported by a shaft and connected to a motor/generator. The flywheel is supported by bearings.

Compared with other ways to store electricity, FES systems have long lifetimes (lasting decades with little or no maintenance; full-cycle lifetimes quoted for flywheels range from in excess of 10,000, up to 100,000, cycles of use).

In the 1950s, flywheel-powered buses, known as *flywheel buses*, were used in *London* and *Paris* and there is ongoing research to make flywheel systems that are smaller, lighter, cheaper and have a great efficiency.

How does a flywheel energy storage system work?

Flywheel energy storage system (FESS) stores energy by means of accelerating a rotor up to a high speed and keeping the energy in the system as inertial energy. This theory has been functioned in synchronous generators to give out a stable voltage.

Are flywheel energy storage systems feasible?

Abstract - This study gives a critical review of flywheel energy storage systems and their feasibility in various applications. Flywheel energy storage systems have gained increased popularity as a method of environmentally friendly energy storage.

How do you charge a flywheel battery?

On-board flywheels: There are two charging methods for the on-board flywheel battery, one is to use electrical energy as input energy, and the second is to directly drive the flywheel to rotate through the transmission device with mechanical energy (mainly used for braking energy recovery of electric vehicles).

What is the difference between a flywheel and a battery?

The physical arrangement of batteries can be designed to match a wide variety of configurations, whereas a flywheel at a minimum must occupy a certain area and volume, because the energy it stores is proportional to its rotational inertia and to the square of its rotational speed.

Are flywheel batteries a good option for solar energy storage?

However, the high cost of purchase and maintenance of solar batteries has been a major hindrance. Flywheel energy storage systems are suitable and economical when frequent charge and discharge cycles are required. Furthermore, flywheel batteries have high power density and a low environmental footprint.

How does a flywheel work?

A flywheel is driven by a reversible electric machine that initially operates as a motor to supply energy to the inertial mass. With the drive system disconnected, the flywheel stores energy in its rotation. Upon request, this latter will be transformed into electrical energy by the generator.

The energy storage principle of flywheel battery is



Principles and application scenarios of flywheel ...

Flywheel energy storage technology is an emerging energy storage technology that stores kinetic energy through a rotor that rotates at high speed in a low-friction environment, and belongs to mechanical energy ...

A review of flywheel energy storage systems: state of the art and

The existing energy storage systems use various technologies, including hydroelectricity, batteries, supercapacitors, thermal storage, energy storage flywheels, [2] and ...



Flywheel Energy Storage , Energy Engineering ...

The flywheel energy storage system is useful in converting mechanical energy to electric energy and back again with the help of fast-spinning flywheels. This system is composed of four key parts: a solid ...

NASA's Mechanical Battery: A Breakthrough in ...

NASA's flywheel-based mechanical battery system showcased a sustainable and efficient alternative to chemical batteries, using

gyroscopic principles for energy storage and spacecraft orientation.



Flywheel Energy Storage

This results in the storage of kinetic energy. When energy is required, the motor functions as a generator, because the flywheel transfers rotational energy to it. This is converted back into electrical energy, thus completing ...

Flywheel Energy Storage Systems and their Applications: A ...

Flywheel energy storage systems have gained increased popularity as a method of environmentally friendly energy storage. Fly wheels store energy in mechanical rotational ...



discharge principle of flywheel energy storage battery

Energy storage Energy storage is the capture of energy produced at one time for use at a later time [1] to reduce imbalances between energy demand and energy production. A device that ...



(PDF) Physical Energy Storage Technologies: ...

This paper focuses on three types of physical energy storage systems: pumped hydro energy storage (PHES), compressed air energy storage (CAES), and flywheel energy storage system (FESS), and



Design and Application of Flywheel-Lithium Battery Composite Energy

For different types of electric vehicles, improving the efficiency of on-board energy utilization to extend the range of vehicle is essential. Aiming at the efficiency reduction ...



Dual-inertia flywheel energy storage system for electric vehicles

Introducing a novel adaptive capacity energy storage concept based on the Dual-Inertia Flywheel Energy Storage System for battery-powered Electric Vehicles and ...



Development of a High Specific Energy Flywheel Module, ...

Flywheels: How the Technology Works A flywheel is a chemical-free, mechanical battery that uses an electric motor to store energy in a rapidly spinning wheel - with 50 times the Storage ...

Exploring Flywheel Energy Storage Systems and Their Future

Overall, the operating principles of flywheel technology underscore its potential as a robust energy solution. By mastering kinetic energy storage, efficient energy conversion processes, and ...

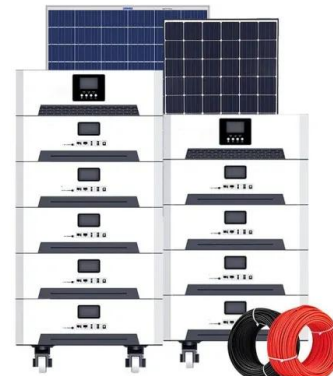


Flywheel Energy Storage System Basics

Practical Applications for Flywheel Energy Storage Several innovative power utilities already use flywheel storage systems to maintain power grid frequency. Renewable ...

How It Works: Flywheel Storage

Learn how flywheel storage works in this illustrated animation from OurFuture.Energy Discover more fantastic energy-related and curriculum-aligned resources for the classroom at <https://ourfuture>



Flywheel Energy Storage , Working & Applications

A flywheel is an inertial energy storage device. It absorbs mechanical energy and serves as a reservoir, storing energy during the period when the supply of energy is more than the requirement and ...

Energy storage systems: a review

The world is rapidly adopting renewable energy alternatives at a remarkable rate to address the ever-increasing environmental crisis of CO2 emissions....



Exploring Flywheel Energy Storage Systems and ...

Overall, the operating principles of flywheel technology underscore its potential as a robust energy solution. By mastering kinetic energy storage, efficient energy conversion processes, and effective management ...

The most complete analysis of flywheel energy ...

Flywheel energy storage is a mechanical storage device that realizes the mutual conversion and storage of electrical energy and mechanical kinetic energy of a high-speed rotating flywheel through an ...



Dual-inertia flywheel energy storage system for ...

Introducing a novel adaptive capacity energy storage concept based on the Dual-Inertia Flywheel Energy Storage System for battery-powered Electric Vehicles and proposing a hierarchical Energy ...

Flywheel Energy Storage Basics

Principle of Flywheel Energy Storage: A flywheel is a rotating disk or cylinder that stores kinetic energy. When energy is input into the flywheel, it starts spinning, and the kinetic energy is ...



The Mechanical Battery: How Flywheels are ...

Revolutionize energy storage with The Mechanical Battery video. Discover the science behind flywheels and how they are transforming the game with cutting-edge

Flywheel Energy Storage in EVs

The increasing demand for efficient and sustainable energy storage solutions has led to the exploration of innovative technologies, including flywheel energy storage (FES) ...



Development and prospect of flywheel energy storage ...

With the rise of new energy power generation, various energy storage methods have emerged, such as lithium battery energy storage, flywheel energy sto...

Flywheel Energy Storage: The Spinning Marvel of Modern Power ...

What's the Buzz About Flywheel Energy Storage? Imagine a giant, high-tech spinning top that stores electricity like a battery but lasts decades longer. That's essentially ...



Photo courtesy of
Flywheel Energy

- LIQUID/AIR COOLING
- INTELLIGENT INTEGRATION
- PROTECTION IP54/IP55
- BATTERY /6000 CYCLES

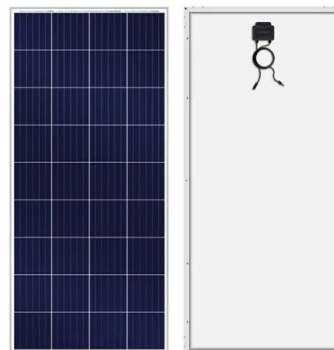


Flywheel Energy Storage Systems , Electricity ...

Flywheel technology is a method of energy storage that uses the principles of rotational kinetic energy. A flywheel is a mechanical device that stores energy by spinning a rotor at very high speeds. The basic concept involves ...

The Status and Future of Flywheel Energy Storage

Flywheels, one of the earliest forms of energy storage, could play a significant role in the transformation of the electrical power system into one that is fully sustainable yet low ...



Flywheel Energy Storage

Flywheel energy storage, an innovative mechanical energy storage method, will hold a significant position in the future energy storage field due to its unique energy conversion principles and ...

Flywheel Energy Storage System

The entire flywheel energy storage system realizes the input, storage, and output processes of electrical energy. The flywheel battery system includes a motor, which operates in the form of ...



Flywheel Energy Storage

Flywheel energy storage is defined as a method for storing electricity in the form of kinetic energy by spinning a flywheel at high speeds, which is facilitated by magnetic levitation in an ...

Technology: Flywheel Energy Storage

Flywheel Energy Storage Systems (FESS) rely on a mechanical working principle: An electric motor is used to spin a rotor of high inertia up to 20,000-50,000 rpm.



Flywheel Energy Storage

Flywheel energy storage, an innovative mechanical energy storage method, will hold a significant position in the future energy storage field due to its unique energy conversion principles and wide application prospects. What ...

Flywheel Energy Storage System

Flywheel Energy Storage Systems (FESS) are defined as systems that store energy by spinning a rotor at high speeds, converting the rotor's rotational energy into electricity.



Contact Us

For catalog requests, pricing, or partnerships, please visit:
<https://www.apartamenty-teneryfa.com.pl>