

JH Solar

Switch-off electrical equipment cannot store energy



Overview

Can stored energy be switched off?

Although we generally tend to think of energy being constantly supplied via outlets and assume that it can be switched off using a switch or similar device, there are many instances when stored energy is also used to power a piece of machinery, particularly in the event of the regular continuous power source ceasing operation.

Can a lock be applied to an energy isolating device?

In some cases, the design of the equipment may not allow for a lock to be directly applied to the energy isolating device. When this occurs, the procedure mandates that these disconnecting means cannot be solely relied upon to ensure an electrically safe work condition.

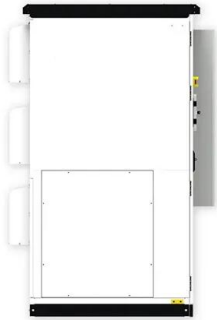
Can a lock be installed if the equipment is not energized?

Additional safety measures must be applied to ensure that the equipment remains de-energized and safe for work, such as removing a fuse or blocking a switch in the off position with a physical barrier. There are scenarios where it's not feasible to install a lock due to equipment design limitations.

Why is the disconnecting means not properly locked out?

The disconnecting means is not properly locked out because the switch handle can still be operated even though the equipment door is locked shut. Forcible removal of the lock will be needed to operate the disconnecting means. The tagout device is not required as long as there is a lock present.

Switch-off electrical equipment cannot store energy

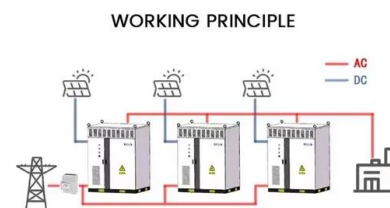


Stay Safe: Key Electrical Safety Guidelines

Shut down the equipment: Turn off the equipment using its normal shut-down procedure. Isolate the equipment: Disconnect the equipment from its energy source to ensure it cannot be accidentally ...

reasons why switching electrical equipment cannot store energy

Ideal capacitors and inductors can store energy indefinitely; however, in practice, discrete capacitors and inductors exhibit "leakage," which typically results in a gradual reduction in the ...



9 Steps For A Fail-Safe Lockout/Tagout - LOTO ...

If you cannot lock out the energy-isolating device, you can use a tagout device. Pair that with one other safety measure to prevent the equipment from turning on, such as blocking a control switch or removing ...

Why Molded Case Switches Can't Store Energy (And Why It ...

Before flames erupt, molded case switches jump into action like a hyper-vigilant bouncer, cutting

off power without storing any energy for dramatic effects. This real-world superhero move ...



Save Energy with Efficient Outlets & Switches

3 ??? Traditional electrical outlets and switches often lead to phantom loads, where devices consume electricity even when turned off. These inefficiencies add up over time, increasing energy consumption and costs. ...

Lockout/Tagout

Equipment using hydraulic pressure shall be locked out by placing the hydraulic pump motor electrical disconnect switch in "off" position, and applying a lockout/tagout device to the ...

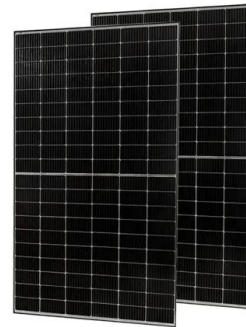


Isolation: Why, When And How To Safely Eliminate Supply

Isolation means cutting off electrical supply to an electrical installation for safety reasons, but there's a lot more to it than flipping a switch.

Safetip #21: Instructions on How to De-Energize ...

Electrical circuits must be checked by qualified persons with proper and calibrated electrical testing equipment to ensure that the equipment could not become energized with the switch in the "off" ...



Electrical Equipment: Types, Functions, and Safety ...

Electrical equipment encompasses a wide range of devices that rely on electrical energy to function. This includes everything from household appliances to industrial machinery. Typically, electrical equipment consists ...

[LOTO program.PDF](#)

The term does not include a push button, selector switch, and other control circuit type devices. Lockout: The placement of a lockout device on an energy-isolating device, in accordance with ...

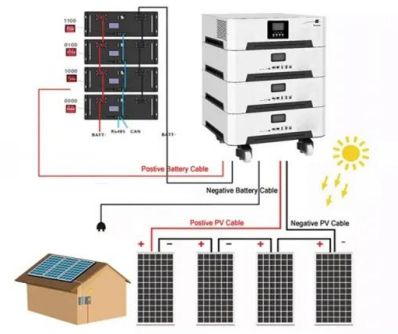


[Why can't the switch store energy?](#)

Limited by their inability to store energy, switches cannot address these challenges. Instead, they sit in a supporting role, facilitating the deployment and management ...

An energy-isolating device is the same as an on/off switch.

An energy-isolating device is not the same as an on/off switch; it is designed to physically disconnect equipment from the energy source for safety. An isolation transformer, ...

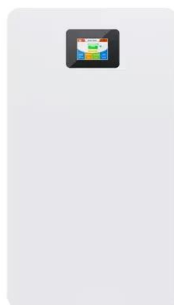


Essential Energy Isolation Verification: Confirming ...

Learn essential tips for energy isolation verification and safe workplace practices. Ensure controlled energy sources are managed effectively for optimal safety.

Isolation cabinet cannot store energy electrically

Our Residential Solar Storage Systems are designed to provide homeowners with a reliable and efficient way to store excess solar energy, reducing electricity bills and increasing energy



[Lesson 1 Flashcards , Quizlet](#)

Tagout is the process of placing a danger tag on the source of electrical power, which indicates that the equipment cannot be operated until the danger tag is removed.

Control of Hazardous Energy - Lock Out / Tag Out

Lockout The placement of a lockout device on an energy isolating device, in accordance with an established procedure, ensuring that the energy isolating device and the equipment being ...



How to store energy to close the switch

Area 1 represents the energy that can be stored in both the direct and the designed charging cycles; area 3 represents the energy released through the switch; and the energy of area 2 is ...

Hazardous Energy Control (Lockout-Tagout).docx

Hazardous Energy Control (Lockout-Tagout) The purpose of this program is to prevent inadvertent operation or energization of machines, equipment, or processes in order to protect ...



Lockout/Tagout (LOTO) Procedures in Electrical ...

Lockout/Tagout (LOTO) is a safety procedure used across industries, including electrical work, to ensure that equipment is properly shut off and remains off during maintenance or repair activities.

Why Power Buttons Don't Meet OSHA ...

This means that simply turning off a machine using a power switch, or activating an emergency stop button, will not normally suffice for lockout. These switches typically interrupt a control circuit, ...



Why does the energy storage switch not store energy?

The energy storage switch does not store energy due to several fundamental reasons, including design limitations, inadequate capacity, and operational inefficiencies.

Hazardous Energy Flashcards , Quizlet

Lockout The placement of a lockout device on an energy isolating device, in accordance with an established procedure, ensuring that the energy isolating device and the equipment being ...



Why Electrical Switches Don't Store Energy: A Shocking Revelation

But here's the kicker: understanding why an electrical switch does not store energy matters more than you'd think. This article isn't just for sparky engineers - it's for ...

Electrical Isolation and Lockout/Tagout (LOTO): What You Need ...

Electrical isolation is the process of physically disconnecting a piece of electrical equipment from all sources of electrical energy. This is done to ensure that the equipment is ...



Lockout/Tagout (LOTO)

Just because you turned off the electrical power does not mean that it cannot move. Lockout/Tagout does not apply to work on cord and plug connected electric equipment when: (a) Unexpected energization or startup of the ...

Emergency breaking, stop and isolation intended ...

Immediate cut off the electrical power As their name indicates, emergency operations are intended to eliminate, as quickly as possible, a danger that occurs unexpectedly. The emergency break is ...



Tool box talk for LOTO & stored energy

Stored energy (also residual or potential energy) is energy that resides or remains in the power supply system. When stored energy is released in an uncontrolled manner, individuals may be ...

Electrical Lockout and Tagout (LOTO) Procedure

This post covers Electrical Lockout & Tagout (LOTO) essentials and recommended procedures. Learn how to prevent electrical risks, protect the employees, and ...



Home

Your leading electrical wholesaler Power Your Next Project with Voltex Discover our comprehensive range of solar, cable and wire, transmission, distribution, lighting, and general ...

Saving Electricity in the Office

Switch off electrical equipment and appliances -
Switch off all non-essential equipment when it is not in use and at the end of the working day. -
Switch off appliances at ...



Contact Us

For catalog requests, pricing, or partnerships, please visit:
<https://www.apartamenty-teneryfa.com.pl>