

JH Solar

Ring main unit f mechanism energy storage



Overview

The Ring Main Unit (RMU) plays a crucial role in power distribution and transmission. This article provides a detailed analysis of the RMU 's working principle, including its definition, structure, classification, and applications, offering valuable insights for professionals, students, and anyone.

The Ring Main Unit (RMU) plays a crucial role in power distribution and transmission. This article provides a detailed analysis of the RMU 's working principle, including its definition, structure, classification, and applications, offering valuable insights for professionals, students, and anyone.

Ring Main Units (RMUs) are electrical distribution devices that efficiently manage energy flow within electrical networks, 2. Energy storage in RMUs can occur through integration with battery systems or other forms of storage technologies, 3. The design of RMUs promotes reliability and improved. What is ring main unit?

Definition of Ring Main Unit The Ring Main Unit, or RMU, was originally designed as a switchgear used in ring-shaped distribution networks. These units typically use load break switches (LBS) due to their relatively low rated current.

How does a ring main unit work?

Working Principle of the Ring Main Unit 2.1 Normal Current Operation Under normal conditions, the load break switch in the RMU is responsible for switching the current on and off. It is designed for frequent operation and ensures safe, reliable circuit control.

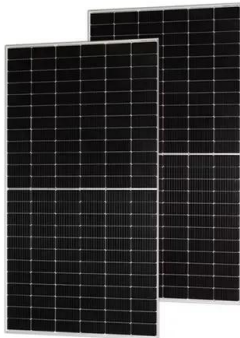
What is a ring main unit (RMU)?

In modern power systems, ensuring the stability and reliability of the electricity supply is essential. The Ring Main Unit (RMU) plays a crucial role in power distribution and transmission.

How do RMU fuses work?

The fuse inside the RMU quickly cuts the circuit to prevent damage. Fuses operate based on thermal effects: when short-circuit current flows, the fuse melts within 10 ms. Some fuses also trigger a striker to trip the load break switch, fully isolating the faulted circuit.

Ring main unit f mechanism energy storage

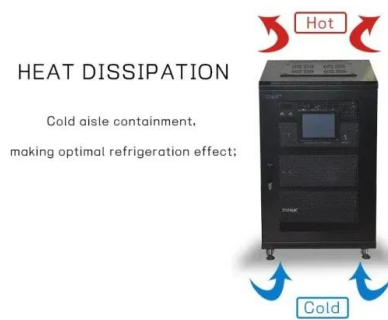


RING MAIN UNIT COMPONENTS TYPES AND APPLICATIONS

What is a battery energy storage system? Battery Energy Storage Systems (BESS) play a fundamental role in energy management, providing solutions for renewable energy integration, ...

Ring Main Distribution with RMU: Power Systems

Ring Main Distribution is used to provide reliable supply to the consumers. Ring Main Units are interconnected in the form of loop to form Ring main.



What are the working principles and applications of high-voltage ring

High Voltage Ring Main Unit (RMU) is a compact switchgear used in power distribution systems, mainly used for 10kV or 20kV voltage level ring network power supply, ...

Exploring the Vital Functions of Ring Main Units (RMUs) in ...

Introduction In the realm of electrical engineering, Ring Main Units (RMUs) stand as essential components that play a crucial role in

ensuring the efficient and ...



Why does the ring main unit store energy?

Thus, the dialogue around energy storage and RMUs isn't exclusively about technology; it embodies a holistic journey towards sustainable, resilient, and economically viable energy systems. In ...

How does the ring main unit store energy?

In the realm of electrical engineering, understanding the mechanisms of energy storage within innovative systems such as Ring Main Units (RMUs) remains crucial for enhancing efficiency and reliability ...

- LiFePO₄
- Wide temp: -20°C to 55°C
- Easy to expand
- Floor mount&wall mount
- Intelligent BMS
- Cycle Life:≥6000
- Warranty :10 years



Understanding the 10kV Distribution Ring Main Unit (RMU)

The 10kV distribution ring main unit is a vital component in medium-voltage power distribution systems. Its primary function is to ensure the safe and stable delivery of ...

What is a Ring Main Unit (RMU)? Key ...

5) Delixi Ring Main Unit Delixi Electric provides a variety of Ring Main Units (RMUs) for power distribution and system reliability. These are essential parts of medium-voltage networks for electricity distribution ...



Microsoft Word

The bus-bar chamber is on the upper operation mechanism, interlocking cable chamber mechanism & low-voltage control chamber The cable chamber is mainly used for the The ...

Switchgear Ring Main Unit Working Principle

A Ring Main Unit (RMU) is a compact, sealed switchgear assembly used in medium voltage (MV) power distribution networks. It plays a crucial role in ensuring uninterrupted power delivery and ...



Ring Main Unit and Switchgear: What Is The Difference

Understand the difference between Ring Main Unit and switchgear, including their functionality, design, applications, and suitability for power systems.

What is a Ring Main Unit (RMU)? Key Components and Working ...

5) Delixi Ring Main Unit Delixi Electric provides a variety of Ring Main Units (RMUs) for power distribution and system reliability. These are essential parts of medium ...



How to read the symbols indication of RMU or Ring Main Unit

This video [How to read the symbols indication of RMU or Ring Main Unit] has been shared from the internet. If you find it inappropriate or wish for it to be removed, kindly contact us, and we ...

33KV SF6 Electrical RMU Manufacturer in China for 30 Years

33Kv SF6 Electrical RMU 33KV sf6 electrical rmu (hereinafter referred to as ring main unit) is a 50Hz AC three-phase indoor high voltage power distribution equipment. The utility model is ...

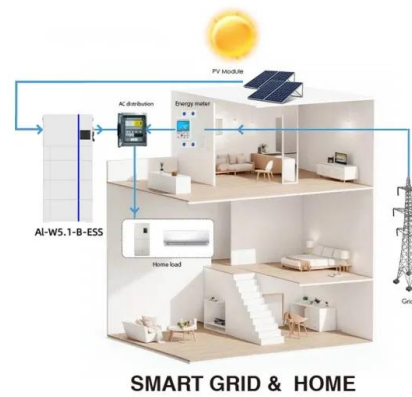


Old RMU.cdr

SafeRing is a SF6 insulated ring main unit and SafePlus is a compact switchgear for applications in medium voltage distribution networks. SafeRing can be supplied as a 2, 3 or 4-way standard ...

What Is the Working Principle of a Ring Main Unit?

The name "Ring Main Unit" comes from its ability to connect multiple power sources, allowing users to receive electricity from two directions, significantly improving reliability.



ring main unit motor energy storage principle

Energy storage flywheel systems are mechanical devices that typically utilize an electrical machine (motor/generator unit) to convert electrical energy in mechanical energy and vice versa.

Ring Main Unit and Switchgear: What Is The ...

Understand the difference between Ring Main Unit and switchgear, including their functionality, design, applications, and suitability for power systems.



What is a Ring Main Unit (RMU) in Power Distribution?

The Ring Main Unit is a vital component in modern power distribution systems. Its role in ensuring reliable, safe, and efficient distribution of electricity cannot be understated. By understanding its ...

How Does a Ring Main Unit Store Energy? Unlocking the Mystery

Now for the million-dollar question: how does a ring main unit store energy? The answer lies in its ability to temporarily maintain operational energy during switching operations.



WHAT IS A RING MAIN UNIT

What are the main process equipment for gravity energy storage In a Gravity Energy Storage system, there are two key components: a lifting mechanism powered by renewable energy, ...

Ring Main Unit - Neotrafo Solutions

A Ring Main Unit (RMU) is an essential switchgear device designed for medium-voltage power distribution systems. It facilitates the connection, measurement, and protection of electrical ...



What is inside the ring main unit?

As an important part of the power system, the ring main unit has the functional characteristics of improving power supply reliability, simplifying operation, improving energy efficiency and strong adaptability.

Ring Main Unit Electric Energy Storage: Powering the Future of ...

Modern ring main unit storage systems don't just store energy - they enable two-way street power flows. Picture your local supermarket selling excess solar power back to the grid through the ...



MEDIUM VOLTAGE RING MAIN UNIT

A - SFA-RM Solution SFA-RM units are designed for supplying reliable energy, protecting electrical equipment in secondary distribution networks up to 17.5 kV. SFA-RM units are the ...

What is ring main unit energy storage

Switchgear . What is ring main unit? Ring main unit is a group of electrical transmission and distribution equipment (high voltage switchgear) installed in metal or non-metal insulated ...

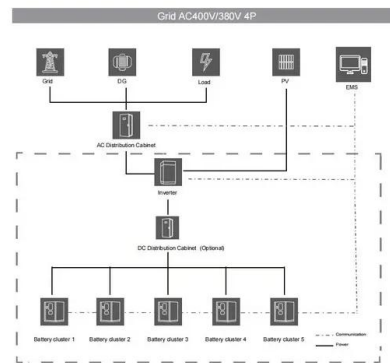


Ring main unit energy storage mechanism

The Ring Main Unit is a group of electrical equipment for transmission and distribution (high-voltage switchgear) installed in a metal or non-metal insulated. installed in the ring network ...

Central cabinet and ring main unit energy storage

Ring Main Unit Basics The ring main unit cabinet is mainly composed of these parts: 1. Chain mechanism: the load switch and the grounding knife closing operation is interlocked 2. Load ...



What is ring main unit energy storage

This manual provides details needed to install and operate the SafeLink ring main unit. The SafeLink unit is certified for use on distribution systems operating at up to 12kV. SafeLink is ...

What Is a Ring Main Unit (RMU)? Functions and Operating ...

The "Ring Main Unit" (RMU) is the cornerstone of the ring network distribution strategy. It is a high-voltage switchgear housed in a metallic enclosure--either stand-alone or ...

12V 10AH



Why does the ring main unit store energy

How does a ring main unit protect your electrical distribution system? Overcurrent and short-circuit faults can severely damage your electrical distribution system. To prevent this, the ring main ...

Dhafir Group For General Trading

Key Technologies For Ring Main Units Insulating medium SF6 Laser welding Gas tightness and dew-point development Pressure relief device / pressure coordination Ready-for-service ...



Contact Us

For catalog requests, pricing, or partnerships, please visit:
<https://www.apartamenty-teneryfa.com.pl>