

JH Solar

London energy storage plan publicity template



Overview

What is a London local area energy plan (Laep)?

It covers: market systems and policy. City Hall is funding and leading subregional Local Area Energy Plans (LAEPs) across London, in partnership with London Councils, London boroughs, government agencies, industry and regulators. There are four subregional groups across London, with each plan involving at least five boroughs.

What is the London energy plan?

The London Energy Plan looks at four scenarios for the city's energy infrastructure to 2050. These scenarios allow us to explore the opportunities that are available for the city. London is a densely populated urban environment which presents a range of opportunities for the energy system that are unique to this type of environment.

What is the London Plan 2021 energy assessment guidance?

The Mayor's Energy Assessment Guidance was updated in 2022 to explain how the policies contained in the London Plan 2021 should be applied using Building Regulations Part L 2021. The updated guidelines continue to require a minimum 35% improvement in on-site regulated carbon emissions relative to Building Regulations Part L.

Do London boroughs need energy planning?

Many London boroughs have also declared climate emergencies and set net zero targets. To deliver these changes, we need to ensure our current infrastructure is resilient to future threats and growth is sustainable. A whole system approach is needed. Local area energy planning sets out to:

What is a London subregional energy plan?

City Hall is funding and leading subregional Local Area Energy Plans (LAEPs) across London, in partnership with London Councils, London boroughs,

government agencies, industry and regulators. There are four subregional groups across London, with each plan involving at least five boroughs. The West London subregional LAEP was completed in July 2023.

London energy storage plan publicity template

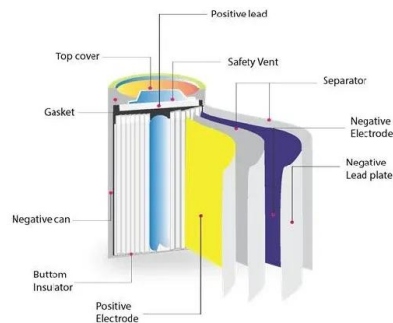


London Energy Plan Scenarios and energy ...

The interactive map allows different scenarios for energy supply and demand across London in 2015, 2025 and 2050 to be explored (in that, it is similar to DECC's 2050 Energy Calculator). The London ...

SOLAR ACTION PLAN FOR LONDON

Executive summary The Mayor wants to make London a zero carbon city, as set out in his Environment Strategy. For this to happen, London will need to be supplied by a range of ...



London Energy Plan Scenarios and energy infrastructure map

The interactive map allows different scenarios for energy supply and demand across London in 2015, 2025 and 2050 to be explored (in that, it is similar to DECC's 2050 ...

Marketing Plan for Advanced Energy Storage Systems Businesses

In today's rapidly evolving energy landscape, the demand for innovative solutions to enhance

efficiency and sustainability has never been greater. Advanced Energy Storage Systems ...



[LPG document template \(green\)](#)

Acknowledgements Special thanks go to Cundall and Targeting Zero for their contribution to the preparation of this guidance document and the Whole Life-Cycle Carbon Assessment template.

[Circular Economy Statement Guidance](#)

This guidance document explains how to prepare a Circular Economy Statement to accompany planning applications that are referable to the Mayor 1 as required by the Intend to Publish ...



[Energy Storage Summit](#)

Max Li-Power Energy Technology Co., Ltd. (hereinafter referred to as "Max Li-Power") is a high-tech enterprise engaged in the research and development, system integration and technical services of new energy ...

London Plan Guidance Housing Design Standards

1.1.2 This guidance takes account of the impact of the Coronavirus pandemic, including the shift to increased homeworking. These Housing Design Standards will provide homes that are safe, ...

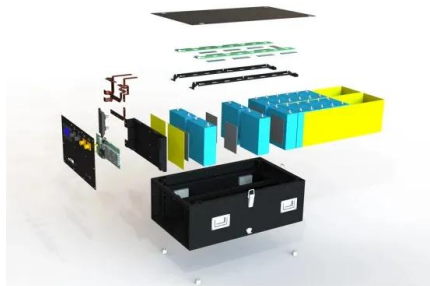


Energy Assessment Guidance

1.2. This guidance document explains how to prepare an energy assessment to accompany strategic planning applications referred to the Mayor3 as set out in London Plan Policy SI 2. It ...

'Be seen' energy monitoring guidance , London ...

The 'Be Seen' energy monitoring guidance explains how developers and owners of new major developments should monitor and report actual operational energy performance to comply with London Plan Policy SI 2, ...



Local area energy planning in London , London ...

Local area energy planning translates net-zero targets into coordinated, on-the ground action for local areas. Find reports and evidence for London's local energy plans.

Energy Storage (2)

Through my Local Area Energy Planning (LAEP) planning initiatives, I am supporting London boroughs to identify and quantify the levels of energy storage that will be needed to deliver



Greater London Authority (GLA)

A Local Area Energy Plan (LAEP) provides a framework for an area to transition away from fossil-fuel based energy systems. It looks at all elements of an energy system's infrastructure (e.g. ...

Scenarios to 2050: London Energy Plan

The London Energy Plan allows us to model London's energy demand, supply and infrastructure to 2050, under several scenarios. All scenarios are based on top down and bottom up ...



Marketing Plan for High Power Energy Storage Advanced ...

Introduction In today's rapidly evolving energy landscape, the demand for innovative solutions to enhance power storage capabilities is more critical than ever. As industries and consumers ...

Energy statements , Westminster City Council

The Mayor's Energy Assessment Guidance was updated in 2022 to explain how the policies contained in the London Plan 2021 should be applied using Building Regulations Part L 2021.

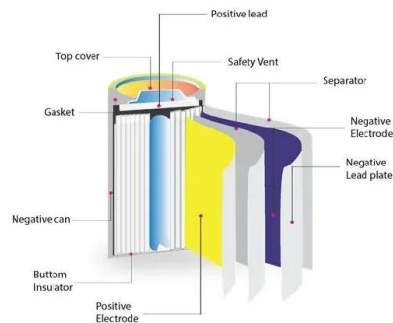


[The London Plan 2021](#)

Welcome to the online London Plan! This online version has been produced as an accessible alternative to the PDF version of the London Plan 2021, it does not replace it. While the written content should be the ...

Publications

14.02.18 Draft London Plan Consultation Response The third 'Getting to Zero' publication gets into the detail of LETI's response to the London Plan consultation. The GLA invited LETI to host a consultation ...



High Power Energy Storage Advanced Technologies Business Plan Template

The transition towards a low-carbon economy has accelerated investments in energy storage systems, particularly in lithium-ion batteries, flow batteries, and other advanced technologies. ...

London Energy Storage Plan Announcement Time: A Game

...

Hold onto your teacups, folks - London's energy storage plan announcement time is finally here! With the city aiming to hit net-zero emissions by 2030, this initiative could ...



Energy Storage Draft Emergency Response Plan

Updated June 10, 2022 This Draft Emergency Response Plan for energy storage facilities, presented by the American Clean Power Association (ACP), is the result of a collaborative ...

Policy 5.17 Waste capacity

5.76 Increasing London's waste processing capacity is a major mayoral priority. The Mayor will work with all parties to achieve this. Through the London Waste and Recycling Board ...



Energy Planning Guidance

The documents are for anyone involved in, or with an interest in, developing energy assessments including developers, energy consultants and local government officials.

Top 10 Publicity Plan Templates with Samples and ...

A publicity plan is the real amplifier of business value, carrying the word about your products and services, far and wide. Ensure your business has the best-possible publicity plan with templates from ...



London energy storage plan publicity template epc

The initial outputs of the London Energy Plan are a spatial map of London's energy supply and demand to 2050 and options for the required supporting infrastructure.

Marketing Plan for Battery Energy Storage System Businesses

Explore Options to Get a Marketing Plan. Get a Marketing Plan Schedule a consultation Are you interested in marketing your battery energy storage system Business? Introduction In an era ...

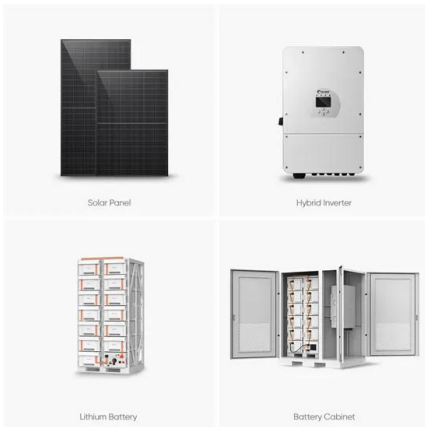


Whole Life-Cycle Carbon Assessments guidance

The GLA prepared this London Plan Guidance (LPG) and assessment template, with technical expertise from Cundall and Targeting Zero, and by engaging with a wide stakeholder range - including developers and ...

Natural Gas Storage Business Plan Template - AVVALE

The growing demand for energy storage solutions, particularly in the natural gas sector, presents a lucrative opportunity for entrepreneurs and investors alike. As the world increasingly shifts ...



The London Plan 2021

The London Plan 2021 is the Spatial Development Strategy for Greater London. It sets out a framework for how London will develop over the next 20-25 years and the Mayor's vision for ...

The London Plan 2021

The London Plan 2021 is the Spatial Development Strategy for Greater London. It sets out a framework for how London will develop over the next 20-25 years and the Mayor's vision for Good Growth. The Plan is part of ...



LFP12V100



The new London Plan: The city's road to net zero

Last October, updated London Plan guidance documents were made available ahead of the new Plan's publication this year. Helping to improve the original Plan, which outlines London's strategy for becoming a ...

Contact Us

For catalog requests, pricing, or partnerships, please visit:
<https://www.apartamenty-teneryfa.com.pl>