

JH Solar

Is pumped storage a form of energy storage



Overview

Pumped-storage hydroelectricity (PSH), or pumped hydroelectric energy storage (PHES), is a type of used by for . A PSH system stores energy in the form of of water, pumped from a lower elevation to a higher elevation. Low-cost surplus off-peak electric power is typically used to run the pumps. During periods of high electrical demand, the stored water is released through

Pumped storage energy storage systems serve a crucial role in energy management by facilitating the efficient utilization and balancing of electricity demands. 1. Defined as a form of hydroelectric power generation, 2. Equipped with two water reservoirs at differing elevations, 3. Utilizing surplus.

Pumped storage energy storage systems serve a crucial role in energy management by facilitating the efficient utilization and balancing of electricity demands. 1. Defined as a form of hydroelectric power generation, 2. Equipped with two water reservoirs at differing elevations, 3. Utilizing surplus.

Pumped storage hydropower (PSH) is a type of hydroelectric energy storage. It is a configuration of two water reservoirs at different elevations that can generate power as water moves down from one to the other (discharge), passing through a turbine. The system also requires power as it pumps water.

Pumped-storage hydroelectricity (PSH), or pumped hydroelectric energy storage (PHES), is a type of hydroelectric energy storage used by electric power systems for load balancing. A PSH system stores energy in the form of gravitational potential energy of water, pumped from a lower elevation.

It's called pumped storage and it's the largest and oldest form of energy storage in the country, and it's the most efficient form of large-scale energy storage. Hydropower was America's first renewable power source. It is often mistakenly considered a tapped resource, but according to the U.S.

Pumped storage hydropower (PSH) is a form of clean energy storage that is ideal for electricity grid reliability and stability. PSH complements wind and solar by storing the excess electricity they create and providing the backup for when the wind isn't blowing, and the sun isn't shining. PSH.

NREL experts are developing tools and partnering with industry to unlock the

full potential of pumped storage hydropower (PSH)—a form of hydropower used to generate electricity, store energy, and provide grid services. Image from IKM 3D. Pumped storage hydropower facilities rely on two reservoirs. What is a pumped storage facility?

Pumped storage facilities are built to push water from a lower reservoir uphill to an elevated reservoir during times of surplus electricity. In pumping mode, electric energy is converted to potential energy and stored in the form of water at an upper elevation, which is why it is sometimes called a “water battery”.

What is pumped-storage hydroelectricity?

Pumped-storage hydroelectricity (PSH), or pumped hydroelectric energy storage (PHES), is a type of hydroelectric energy storage used by electric power systems for load balancing. A PSH system stores energy in the form of gravitational potential energy of water, pumped from a lower elevation reservoir to a higher elevation.

What is pumped Energy Storage?

Pumped storage is by far the largest-capacity form of grid energy storage available, and, as of 2020, accounts for around 95% of all active storage installations worldwide, with a total installed throughput capacity of over 181 GW and as of 2020 a total installed storage capacity of over 1.6 TWh.

How does a pumped storage hydropower plant work?

Image from IKM 3D. Pumped storage hydropower facilities rely on two reservoirs at different elevations to store and generate energy. When other power plants generate more electricity than the grid needs, a PSH plant can use that power to pump water into the upper reservoir.

What is pumped storage hydropower (PSH)?

Pumped storage hydropower (PSH) is a type of hydroelectric energy storage. It is a configuration of two water reservoirs at different elevations that can generate power as water moves down from one to the other (discharge), passing through a turbine. The system also requires power as it pumps water back into the upper reservoir (recharge).

What is pumped hydro energy storage?

(PHES) Energy used to pump water from a lower reservoir to an upper reservoir Electrical energy input to motors converted to rotational mechanical energy Pumps transfer energy to the water as kinetic , then potential energy
K. Webb ESE 471 6 Pumped-Hydro Energy Storage

Is pumped storage a form of energy storage



What Is Pumped Hydroelectric Energy Storage?

The energy storage capacity of a PSH depends on the size of its two reservoirs, while the amount of power generated is linked. Pumped-storage hydropower is the most ...

Pumped hydropower energy storage

Pumped hydropower storage (PHS), also called pumped hydroelectricity storage, stores electricity in the form of water head for electricity supply/demand balancing. For ...



Pumped-storage renovation for grid-scale, long ...

a, Schematic of pumped-storage renovation. b, Short-duration energy storage, which can be provided by reservoirs with a water storage capacity of at least several hours. c, Long-duration energy

DOE ESHB Chapter 9: Pumped Hydroelectric Storage

Abstract Pumped hydroelectric storage (PHS) is the most widely used electrical energy storage technology in the world today. It can offer a wide range of services to the modern-day power ...



Pumped storage plants in India: assessing policies and progress

ESS technologies enable the conversion of electricity into other forms of energy for storage and later use. Among these, pumped storage plants (PSPs) remain one of the ...

Pumped-Storage Hydroelectricity

Pumped storage hydroelectricity is a form of energy storage using the gravitational potential energy of water. Storing the energy is achieved by pumping water from a reservoir at a lower ...



Microsoft Word

Pumped storage hydroelectric (PSH) facilities store energy in the form of water in an upper reservoir, pumped from another reservoir at a lower elevation (Energy Storage Association n.d.).

Pumped hydropower energy storage

Pumped hydroelectric storage facilities store energy in the form of water in an upper reservoir, pumped from another reservoir at a lower elevation. During periods of high electricity demand, power is generated by releasing the ...



Pumped Storage Hydropower, PNNL

That's where pumped storage hydropower (PSH) plays a key role. Like a giant water battery, PSH plants store energy in the form of water to be used at later times. But unlike batteries, PSH ...

Pumped Storage Hydropower Projects Around the ...

Pumped storage hydropower (PSH) is a form of energy storage technology that has been in use for over a century. PSH projects store energy by pumping water from a lower reservoir to an upper ...



Potential of different forms of gravity energy storage

With the continuous increase in the proportion of renewable energy on the power grid, the stability of the grid is affected, and energy storage technology emerges as a major ...

A battery by any other name: Rethinking energy ...

This digital mock-up showcases a pumped storage hydropower plant in action. This form of renewable energy stores electricity efficiently and boasts the lowest greenhouse gas emissions among grid ...



What is Pumped Storage Hydropower?

Pump storage hydropower - PSH (pumped-storage hydroelectricity) or PHES (pumped hydroelectric energy storage) is a type of hydroelectric energy storage used for load balancing in electric power ...

How Pumped Hydro Storage Works: An Overview

Discover how pumped hydro storage works and how it can store large amounts of energy, providing a reliable and cost-effective solution for energy storage.



The different types of energy storage and their opportunities

Watch the on-demand webinar about different energy storage applications 4. Pumped hydro Energy storage with pumped hydro systems based on large water reservoirs ...

IRENA - International Renewable Energy Agency

Este informe examina la operación innovadora del almacenamiento hidroeléctrico bombeado, destacando su papel en la transición energética y la integración de energías renovables.

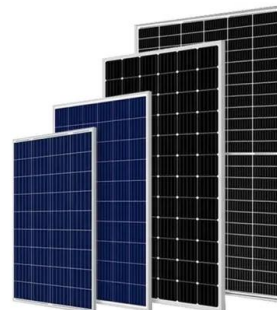


Pumped storage hydropower: Water batteries for ...

Pumped storage hydropower (PSH) is a form of clean energy storage that is ideal for electricity grid reliability and stability. PSH complements wind and solar by storing the excess electricity they create and providing the ...

Pumped Storage Hydropower Plants: PSH

Pumped storage hydro plants are a type of energy storage system that utilizes the potential energy of water to store and generate electricity. This method stores energy in the form of gravitational potential ...



What is renewable energy storage (and why is it ...)

Pumped hydroelectric energy storage, or pumped hydro, stores energy in the form of gravitational potential energy of water. When demand is low, surplus electricity from the grid is used to pump water up ...

Pumped hydro energy storage system: A technological review

Pumped hydroelectric energy storage stores energy in the form of potential energy of water that is pumped from a lower reservoir to a higher level reservoir. In this type of ...



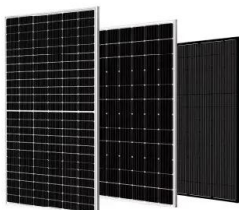
Pumped Hydro Energy Storage

Pumped Hydro Energy Storage (PHES) plants are a particular type of hydropower plants which allow not only to produce electric energy but also to store it in an upper reservoir in the form of ...



What are pumped storage energy storage ...

Pumped storage energy storage systems are predominantly recognized as an advanced technique that leverages gravitational potential energy to manage energy loads.



Pumped-storage renovation for grid-scale, long-duration energy storage

a, Schematic of pumped-storage renovation. b, Short-duration energy storage, which can be provided by reservoirs with a water storage capacity of at least several hours. c, ...

Pumped Storage Hydropower , PNNL

That's where pumped storage hydropower (PSH) plays a key role. Like a giant water battery, PSH plants store energy in the form of water to be used at later times. But unlike batteries, PSH plants can store energy at a much ...



How Pumped Storage Hydropower Works

Pumped storage hydropower (PSH) is one of the most-common and well-established types of energy storage technologies and currently accounts for 96% of all utility-scale energy storage capacity in the United States.

SECTION 3: PUMPED-HYDRO ENERGY STORAGE

If we allow the mass to fall back to its original height, we can capture the stored potential energy Potential energy converted to kinetic energy as the mass falls



Energy Storage

This method of storing energy is by far the most common type of solution, making up 99% of global energy storage. Pumped hydro storage (PHS) allows a large amount of stored energy to be accessed almost straight ...

Pumped hydro energy storage system: A technological review

Pumped storage is the largest-capacity form of grid energy storage available and as of March 2012. As reported by the Electric Power Research Institute (EPRI) PHES accounts ...



What Is Pumped Hydroelectric Energy Storage?

Unlike wind power or solar, which depend on the weather, pumped storage is a clean energy storage that is ideal for electricity grid reliability and stability. Pumped ...

Pumped Storage Hydropower

Pumped storage hydro - "the World's Water Battery" Pumped storage hydropower (PSH) currently accounts for over 90% of storage capacity and stored energy in grid scale ...



Contact Us

For catalog requests, pricing, or partnerships, please visit:
<https://www.apartamenty-teneryfa.com.pl>