

Overview

First-generation flywheel energy-storage systems use a large steel flywheel rotating on mechanical bearings. Newer systems use carbon-fiber composite rotors that have a higher tensile strength than steel and can store much more energy for the same mass.

Flywheel energy storage (FES) works by accelerating a rotor to a very high speed and maintaining the energy in the system as . When energy is extracted from the system, the flywheel's rotational.

A typical system consists of a flywheel supported by connected to a . The flywheel and sometimes.

TransportationAutomotiveIn the 1950s, flywheel-powered buses, known as .

- • • - Form of power supply
- - High-capacity electrochemical capacitor .

GeneralCompared with other ways to store electricity, FES systems have long lifetimes (lasting decades).

Flywheels are not as adversely affected by temperature changes, can operate at a much wider temperature range, and are not subject to many of the common failures of chemical . They are also less potentially damaging to the environment, being.

- Beacon Power Applies for DOE Grants to Fund up to 50% of Two 20 MW Energy Storage Plants, Sep. 1, 2009
- Sheahen.

Flywheel energy storage can retain energy for extended periods contingent upon numerous variables. 1. Flywheel technology typically allows for energy storage durations ranging from a few minutes to several hours, depending on design and operational parameters. 2. Factors influencing retention time.

Flywheel energy storage can retain energy for extended periods contingent upon numerous variables. 1. Flywheel technology typically allows for energy storage durations ranging from a few minutes to several hours, depending on design and operational parameters. 2. Factors influencing retention time.

Flywheel energy storage (FES) works by accelerating a rotor (flywheel) to a very high speed and maintaining the energy in the system as rotational energy. When energy is extracted from the system, the flywheel's rotational speed is reduced as a consequence of the principle of conservation of.

Flywheel energy storage is an energy storage technology with high power density, high reliability, long life, and environmental friendliness. It is characterized by full magnetic levitation, low energy consumption, fast response, long life, high number of charge and discharge cycles. 1. What is.

long cycle life and flexibility in providing ancillary services to the grid, such as frequency regulation, voltage support, etc. The fundamentals of the technology and recent developments are reviewed, firstly with an emphasis on the design considerations and performance metrics. Then the.

The kinetic energy storage system based on advanced flywheel technology from Amber Kinetics maintains full storage capacity throughout the product lifecycle, has no emissions, operates in a wide range of environmental conditions, and is fully recyclable at the end of life. This project has advanced.

Flywheel energy storage technology is an emerging energy storage technology that stores kinetic energy through a rotor that rotates at high speed in a low-friction environment, and belongs to mechanical energy storage technology. It has the characteristics of high power, fast response, high. What is a flywheel energy storage system?

First-generation flywheel energy-storage systems use a large steel flywheel rotating on mechanical bearings. Newer systems use carbon-fiber composite rotors that have a higher tensile strength than steel and can store much more energy for the same mass. To reduce friction, magnetic bearings are sometimes used instead of mechanical bearings.

Does a flywheel energy storage system affect the environment?

Flywheel energy storage system use is increasing, which has encouraged research in design improvement, performance optimization, and cost analysis. However, the system's environmental impacts for utility applications have not been widely studied.

Can flywheel energy storage be commercially viable?

This project explored flywheel energy storage R&D to reach commercial

viability for utility scale energy storage. This required advancing the design, manufacturing capability, system cost, storage capacity, efficiency, reliability, safety, and system level operation of flywheel energy storage technology.

What is a flywheel/kinetic energy storage system (fess)?

Thanks to the unique advantages such as long life cycles, high power density, minimal environmental impact, and high power quality such as fast response and voltage stability, the flywheel/kinetic energy storage system (FESS) is gaining attention recently.

How much energy does a flywheel produce?

The net energy ratios of steel and composite flywheels are 2.5–3.5 and 2.7–3.8. The GHG emissions of steel and composite flywheels are 75–121 and 49–95 kg CO₂ eq/MWh. Flywheel energy storage systems are feasible for short-duration applications, which are crucial for the reliability of an electrical grid with large renewable energy penetration.

Are flywheel-based hybrid energy storage systems based on compressed air energy storage?

While many papers compare different ESS technologies, only a few research , studies design and control flywheel-based hybrid energy storage systems. Recently, Zhang et al. present a hybrid energy storage system based on compressed air energy storage and FESS.

Flywheel energy storage life



Applications of flywheel energy storage system on load frequency

Flywheel energy storage systems (FESS) are considered environmentally friendly short-term energy storage solutions due to their capacity for rapid and efficient energy storage ...

Principles and application scenarios of flywheel ...

Flywheel energy storage is a high-power, long-life and high-efficiency power energy storage technology. Compared with other energy storage technology, flywheel energy storage is characterized by almost no friction loss and low ...



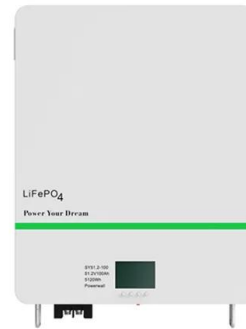
Fatigue Life of Flywheel Energy Storage Rotors Composed of ...

In supporting the stable operation of high-penetration renewable energy grids, flywheel energy storage systems undergo frequent charge-discharge cycles, resulting in significant stress ...

What is the cycle life of flywheel energy storage?

The lifespan of a flywheel energy storage system

is primarily defined by its cycle life, which can range from 20,000 to 30,000 cycles, alongside other influencing factors.



Enhancing vehicular performance with flywheel energy storage ...

Flywheel Energy Storage Systems (FESS) are a pivotal innovation in vehicular technology, offering significant advancements in enhancing performance in vehicular ...

Development and prospect of flywheel energy storage ...

With the rise of new energy power generation, various energy storage methods have emerged, such as lithium battery energy storage, flywheel energy sto...



Flywheel Energy Storage

Flywheel energy storage (FES) systems store energy in the form of kinetic energy by spinning a rotor at high speeds. This technology offers several advantages, including rapid response ...



Overview of Flywheel Systems for Renewable Energy ...

storage systems (FESS) are summarized, showing the potential of axial-flux permanent-magnet (AFPM) machines in such applications. Design examples of high-speed AFPM machines are ...



A Review of Flywheel Energy Storage System ...

The operation of the electricity network has grown more complex due to the increased adoption of renewable energy resources, such as wind and solar power. Using energy storage technology can improve ...

The most complete analysis of flywheel energy storage for new ...

Flywheel energy storage is an energy storage technology with high power density, high reliability, long life, and environmental friendliness. It is characterized by full ...



Life cycle assessment of electrochemical and mechanical energy storage

The effect of the co-location of electrochemical and kinetic energy storage on the cradle-to-gate impacts of the storage system was studied using LCA methodology. The ...

A Review of Flywheel Energy Storage System Technologies and ...

Energy storage systems (ESS) provide a means for improving the efficiency of electrical systems when there are imbalances between supply and demand. Additionally, they are a key element ...



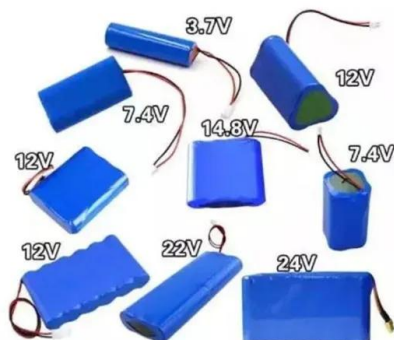
Flywheel Energy Storage

Advances in power electronics, magnetic bearings, and flywheel materials coupled with innovative integration of components have resulted in direct current (DC) flywheel energy storage ...



A review of stress analysis on materials and structures for flywheel

4 ???· As the core component for energy storage, the rotor's stress distribution and evolution under high-speed rotation directly affect the system's safety and reliability. This paper reviews ...



Flywheel energy storage systems and their application with ...

The rising demand for continuous and clean electricity supply using renewable energy sources, uninterrupted power supply to responsible consumers and an increase in the use of storage ...

How long can flywheel energy storage be stored?

Effectively maintained vacuum conditions contribute to an overall increase in the lifespan and reliability of the energy storage system, proving a critical advancement in flywheel technology. The growing ...

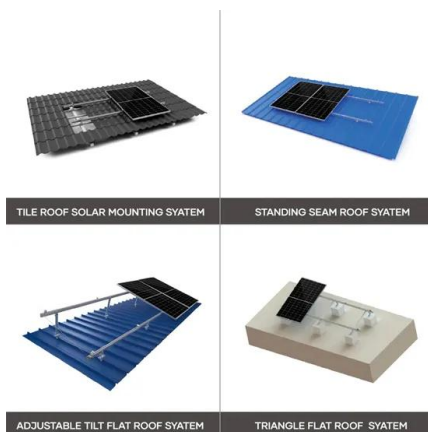


Enhancing Electric Vehicle Performance and Battery Life through

The results demonstrate that the integration of a flywheel energy storage system in the EV powertrain has a positive impact on the battery life.

Peer Review Oct 2005

Flywheel Energy Storage System Why Pursue Flywheel Energy Storage? Non-toxic and low maintenance Potential for high power density (W/kg) and high energy density (W-Hr/ kg) Fast ...



What is the cycle life of flywheel energy storage?

1. The cycle life of flywheel energy storage typically ranges between 20,000 and 30,000 cycles, depending on various conditions.
2. Factors such as the material composition, design, and operating ...

Dual-inertia flywheel energy storage system for ...

Introducing a novel adaptive capacity energy storage concept based on the Dual-Inertia Flywheel Energy Storage System for battery-powered Electric Vehicles and proposing a hierarchical Energy ...



The most complete analysis of flywheel energy storage for new energy

Flywheel energy storage is an energy storage technology with high power density, high reliability, long life, and environmental friendliness. It is characterized by full ...

Flywheel Energy Storage Systems and Their ...

This study gives a critical review of flywheel energy storage systems and their feasibility in various applications. Flywheel energy storage systems have gained increased popularity as a method of



A review of flywheel energy storage systems: state of the art and

There is noticeable progress in FESS, especially in utility, large-scale deployment for the electrical grid, and renewable energy applications. This paper gives a review of the ...

A review of flywheel energy storage systems: state of the art and

Thanks to the unique advantages such as long life cycles, high power density, minimal environmental impact, and high power quality such as fast response and voltage ...



The Status and Future of Flywheel Energy Storage

Outline Flywheels, one of the earliest forms of energy storage, could play a significant role in the transformation of the electrical power system into one that is fully sustainable yet low cost. ...

Energy and environmental footprints of flywheels for utility-scale

In this study, an engineering principles-based model was developed to size the components and to determine the net energy ratio and life cycle greenhouse gas emissions of ...



[DOE ESHB Chapter 7 Flywheels](#)

broad range of applications today. In their modern form, flywheel energy storage systems are standalone machines that absorb or provide electricity to an application. Flywheels are best ...

The Flywheel Energy Storage System: A Conceptual Study,

...

The Flywheel energy storage approach is currently considered as one of the most successful figures of energy storage, and many attempts have been made to improve this technology.

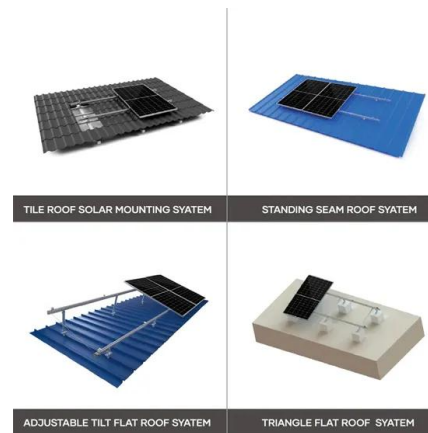


Flywheel hybridization to improve battery life in energy storage

However, the use of combined battery - flywheel storage systems is only minimally investigated in literature in terms of energy benefits and, above all, effects on battery ...

A Comprehensive Review on Flywheel Energy Storage Systems: ...

Finding efficient and satisfactory energy storage systems (ESSs) is one of the main concerns in the industry. Flywheel energy storage system (FESS) is one of the most ...



Flywheel Systems for Utility Scale Energy Storage

The kinetic energy storage system based on advanced flywheel technology from Amber Kinetics maintains full storage capacity throughout the product lifecycle, has no emissions, operates in ...

Development of a High Specific Energy Flywheel Module, ...

Flywheel Applications For Space Flywheels For Energy Storage Flywheels can store energy kinetically in a high speed rotor and charge and discharge using an electrical motor/generator. ...



48V 100Ah



The Status and Future of Flywheel Energy Storage

Now, as other mechanical, thermal-to-electric, and renewable-fuel-based storage technologies develop, these will provide storage at a lower cost, greater duration, and in a more sustainable ...

Contact Us

For catalog requests, pricing, or partnerships, please visit:
<https://www.apartamenty-teneryfa.com.pl>