

JH Solar

Energy storage power station installation location



Overview

Selecting the right installation location for wall-mounted energy storage batteries is crucial for maximizing efficiency, ensuring safety, and extending the lifespan of the battery system. This guide provides detailed insights and practical advice on identifying the best location for your energy.

Selecting the right installation location for wall-mounted energy storage batteries is crucial for maximizing efficiency, ensuring safety, and extending the lifespan of the battery system. This guide provides detailed insights and practical advice on identifying the best location for your energy.

The installation of energy storage power stations involves several critical steps, including site selection, engineering design, system configuration, regulatory compliance, and commissioning. Each of these components plays an essential role in ensuring the efficient operation and long-term.

When planning a BESS installation, the choice of location is critical. A suitable site must offer easy access for both construction and ongoing maintenance, without compromising safety or functionality. Accessibility to transportation routes is important for transporting the large equipment needed.

choosing the perfect energy storage device installation location isn't exactly dinner table conversation. But for anyone serious about renewable energy (or just tired of power outages ruining Netflix binges), it's the secret sauce for maximizing efficiency. The global energy storage market, worth.

Battery storage power stations store electrical energy in various types of batteries such as lithium-ion, lead-acid, and flow cell batteries. These facilities require efficient operation and management functions, including data collection capabilities, system control, and management capabilities.

Battery Energy Storage Systems, or BESS, help stabilize electrical grids by providing steady power flow despite fluctuations from inconsistent generation of renewable energy sources and other disruptions. While BESS technology is designed to bolster grid reliability, lithium battery fires at some.

Electricity storage can be deployed throughout an electric power system—functioning as generation, transmission, distribution, or end-use assets—an advantage when it comes to providing local solutions to a variety of issues. Sometimes placing the right storage technology at a key location can. What are battery storage power stations?

Battery storage power stations are usually composed of batteries, power conversion systems (inverters), control systems and monitoring equipment. There are a variety of battery types used, including lithium-ion, lead-acid, flow cell batteries, and others, depending on factors such as energy density, cycle life, and cost.

What is the construction process of energy storage power stations?

The construction process of energy storage power stations involves multiple key stages, each of which requires careful planning and execution to ensure smooth implementation.

What is a battery energy storage system?

In recent years, Battery Energy Storage Systems (BESS) have become an essential part of the energy landscape. With a growing emphasis on renewable energy sources like solar and wind, BESS plays a crucial role in stabilizing the power grid and ensuring a reliable supply of electricity.

Why do battery storage power stations need a data collection system?

Battery storage power stations require complete functions to ensure efficient operation and management. First, they need strong data collection capabilities to collect important information such as voltage, current, temperature, SOC, etc.

What is a battery energy storage system design plan?

Detailed battery energy storage system design plans were developed based on site surveys, geological assessments and technical specifications. This includes producing construction blueprints, drafting drawings from various disciplines (structural, civil engineering, electrical, etc.), and signing technical agreements with equipment manufacturers.

What does a power station builder do?

Activities include equipment procurement, power station area construction

(including foundation pouring, battery box installation, booster warehouse, combiner box, inverter, etc.), peripheral line construction, equipment installation, testing, etc. All construction work must adhere to safety standards and be thoroughly tested and commissioned.

Energy storage power station installation location



How to Build a Pumped Storage Power Station: A Step-by-Step ...

Ever wondered how we can store solar energy captured at noon for your Netflix binge at midnight? Enter pumped storage hydropower plants - the world's largest "water ...

Pumped-storage renovation for grid-scale, long ...

Grid-scale, long-duration energy storage has been widely recognized as an important means to address the intermittency of wind and solar power. This Comment explores the potential of using



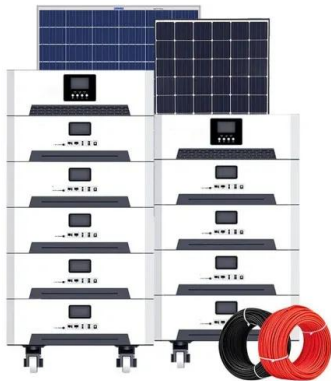
World's Largest Sodium-Ion Battery Now Operational

Key Features of the Project The Datang Hubei Sodium Ion New Energy Storage Power Station stands as a landmark project in the energy storage sector. With 50 MW/100 ...

How is the energy storage power station installed? , NenPower

1. Energy storage power stations are installed through carefully planned steps, beginning with

site selection, then moving on to design and planning, followed by construction ...



Guidance on co-location of battery energy storage ...

Guide on co-locating battery energy storage systems (BESS) with power generation plants. Covers benefits, risks, and key considerations for integration.

How much does it cost to develop an energy storage power station

1. LOCATION ANALYSIS Determining the geographical site for an energy storage power station is crucial. The proximity to existing electrical grids, renewable energy ...



What are the Essential Site Requirements for Battery Energy ...

When planning a BESS installation, the choice of location is critical. A suitable site must offer easy access for both construction and ongoing maintenance, without ...

A road map for battery energy storage system ...

NFPA 855, the Standard for the Installation of Stationary Energy Storage Systems, is increasingly being incorporated into adopted local Codes and Standards across the United States.



What is the electricity price of energy storage power station?

The price of electricity generated by energy storage power stations can significantly vary based on several key factors, including 1. geographical location, regional ...

Battery Energy Storage Systems Report

This information was prepared as an account of work sponsored by an agency of the U.S. Government. Neither the U.S. Government nor any agency thereof, nor any of their employees, ...



Home Energy Storage (Stackble system)



- High Efficiency
- Easy Installation
- Safe and Reliable
- Perfect Compatibility

- Product Introduction**
- Scalable from 10 kWh to 50 kWh
 - Self-Consumption Optimization
 - Integrated with inverter to avoid the compatibility problem
 - LFP battery, safest and long cycle life
 - Stackable design, effortless installation
 - Capable of High-Powered Emergency Backup and Off-Grid Function

CEC Approves World's Largest Solar + Battery Storage Project in ...

SACRAMENTO - The California Energy Commission (CEC) on Wednesday approved the Darden Clean Energy Project (DCEP), the first to be permitted under the state's ...

Optimal site selection study of wind-photovoltaic-shared energy storage

Wind-photovoltaic-shared energy storage system can improve the utilization efficiency of renewable energy resources while reducing the idle rate of en...



A Comprehensive Roadmap for Successful Battery Energy Storage ...

A Roadmap for Battery Energy Storage System Execution -- ### Introduction The integration of energy storage products commences at the cell level, with manufacturers ...

How much does it cost to develop an energy ...

1. LOCATION ANALYSIS Determining the geographical site for an energy storage power station is crucial. The proximity to existing electrical grids, renewable energy sources, and other infrastructural facets ...



Energy Storage , Edison International

RELIABILITY UTILITY-OWNED ENERGY STORAGE (RUOES) The RUOES project aims to install three battery storage systems at locations across SCE's service area, with a total capacity of 537.5 MWh, enough to power ...

A road map for battery energy storage system execution

NFPA 855, the Standard for the Installation of Stationary Energy Storage Systems, is increasingly being incorporated into adopted local Codes and Standards across ...



Grid-Scale Battery Storage: Frequently Asked Questions

What is grid-scale battery storage? Battery storage is a technology that enables power system operators and utilities to store energy for later use. A battery energy storage system (BESS) is ...

What information does the owner need to provide for the installation ...

Before installing industrial and commercial energy storage power stations, the owner needs to provide information including the enterprise property rights, power load, power ...



How much does a grid-connected energy storage ...

1. The cost of a grid-connected energy storage power station typically ranges from \$400 to \$1,000 per kWh of installed capacity, varying significantly based on technology types and regional factors. The ...

Capacity optimization strategy for gravity energy ...

The integration of renewable energy sources, such as wind and solar power, into the grid is essential for achieving carbon peaking and neutrality goals. However, the inherent variability and unpredictability of ...



Top 10: US Battery Energy Storage Facilities , Energy Magazine

As the demand for renewable energy remains crucial, battery energy storage systems have emerged to stabilise power grids and enhance the integration of renewable ...

How much does an urban energy storage power ...

The expense associated with constructing an urban energy storage power station varies widely based on several factors, notably 1. technology type, 2. capacity requirements, 3. location, 4. installation costs.



Energy Storage Installation Site Requirements: A Comprehensive ...

Choosing the right location for energy storage installation isn't just about finding empty land - it's like matchmaking between technology and terrain. Get it wrong, and you'll ...

How is the energy storage power station installed?

Energy storage power stations are installed through carefully planned steps, beginning with site selection, then moving on to design and planning, followed by construction and installation of necessary ...



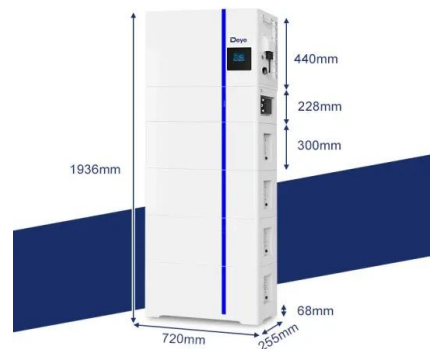
Indoor vs. Outdoor Installation: Choosing the Best Location for ...

Discover whether an indoor or outdoor installation is best for your energy storage system. Learn about environmental impacts, safety, and how to maximize product ...

Energy Storage Device Installation Location: A Practical Guide for

choosing the perfect energy storage device installation location isn't exactly dinner table conversation. But for anyone serious about renewable energy (or just tired of ...

ESS



Top 10: US Battery Energy Storage Facilities

As the demand for renewable energy remains crucial, battery energy storage systems have emerged to stabilise power grids and enhance the integration of renewable sources. Check out the top 10 ...

Huge Texas battery energy storage facility begins ...

Sungrow Power Supply provided the PowerTitan series to the project, which is located within a wind and solar hub in the Lower Colorado River Authority's transmission network. The PowerTitan is a ...

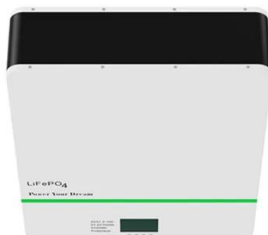


How to Choose an Optimal Installation Location for Wall-Mounted ...

This guide provides detailed insights and practical advice on identifying the best location for your energy storage unit, taking into account various environmental, safety, and operational factors.

Economic and environmental analysis of coupled PV-energy storage

The coupled photovoltaic-energy storage-charging station (PV-ES-CS) is an important approach of promoting the transition from fossil energy consumption to low-carbon ...



Electricity storage: Location, location, location ...

Sometimes placing the right storage technology at a key location can alleviate a supply shortage situation, relieve congestion, defer transmission additions or substation upgrades, or postpone the need for ...

Battery storage power station - a comprehensive guide

The guide covers the construction, operation, management, and functionalities of these power stations, including their contribution to grid stability, peak shaving, load shifting, ...



How much does a MW energy storage power ...

The selection of energy storage technology heavily influences the economics of a MW energy storage power station. For instance, lithium-ion batteries, while their costs have trended downward, ...

Contact Us

For catalog requests, pricing, or partnerships, please visit:
<https://www.apartamenty-teneryfa.com.pl>