

**JH Solar**

# Energy storage flywheel weight



## Overview

---

First-generation flywheel energy-storage systems use a large steel flywheel rotating on mechanical bearings. Newer systems use carbon-fiber composite rotors that have a higher tensile strength than steel and can store much more energy for the same mass.

Flywheel energy storage (FES) works by accelerating a rotor to a very high speed and maintaining the energy in the system as . When energy is extracted from the system, the flywheel's rotational.

A typical system consists of a flywheel supported by connected to a . The flywheel and sometimes.

TransportationAutomotiveIn the 1950s, flywheel-powered buses, known as .

- • • - Form of power supply
- - High-capacity electrochemical capacitor .

GeneralCompared with other ways to store electricity, FES systems have long lifetimes (lasting decades).

Flywheels are not as adversely affected by temperature changes, can operate at a much wider temperature range, and are not subject to many of the common failures of chemical . They are also less potentially damaging to the environment, being.

- Beacon Power Applies for DOE Grants to Fund up to 50% of Two 20 MW Energy Storage Plants, Sep. 1, 2009
- Sheahen.

This explains its popularity in applications that require high energy capacities and are weight-sensitive, such as automotive and consumer electronics. Comparing to batteries, both flywheel and super-capacitor have high power density and lower cost per power capacity. The drawback of.

This explains its popularity in applications that require high energy capacities and are weight-sensitive, such as automotive and consumer electronics. Comparing to batteries, both flywheel and super-capacitor have high power density and lower cost per power capacity. The drawback of.

Flywheel energy storage (FES) works by accelerating a rotor (flywheel) to a very high speed and maintaining the energy in the system as rotational energy. When energy is extracted from the system, the flywheel's rotational speed is reduced as a consequence of the principle of conservation of.

The fundamental equation of any flywheel energy storage system is the following: where:  $\omega$  — Angular velocity of the rotating component. We measure it in  $\text{rad/s}$   $\omega[\text{rad/s}] = 2 \cdot \pi \cdot \omega[1/\text{s}]$ . Our angular velocity calculator and circular motion calculator can help you with this conversion. The value of I I.

Flywheel energy storage is an efficient and reliable energy storage technology, and the calculation of its capacity is crucial to evaluate the performance of the energy storage system. This paper will discuss the calculation of flywheel energy storage capacity. We need to understand the.

Calculation Example: Flywheels are devices that store energy in the form of rotating mass. The energy stored in a flywheel is given by the formula  $E = (1/2) * W * (D/2)^2 * (N/60)^2$ , where W is the weight of the flywheel, D is the diameter of the flywheel, and N is the rotational speed of the.

Definition: This calculator computes the rotational energy (E) stored in a flywheel, based on its mass, radius, shape, and angular velocity. Purpose: It is used in engineering to design and analyze flywheel energy storage systems, which store energy as rotational kinetic energy and can release it.

This paper will review how energy is stored in a flywheel using the simple concept of a massive ball attached to a limited strength string. This concept will also be used to better understand the relationship between flywheel mass and strength properties. The paper will discuss how material. What is a flywheel energy storage system?

First-generation flywheel energy-storage systems use a large steel flywheel rotating on mechanical bearings. Newer systems use carbon-fiber composite rotors that have a higher tensile strength than steel and can store much more energy for the same mass. To reduce friction, magnetic bearings are sometimes used instead of mechanical bearings.

How much energy does a flywheel produce?

The net energy ratios of steel and composite flywheels are 2.5–3.5 and 2.7–3.8. The GHG emissions of steel and composite flywheels are 75–121 and 49–95 kg CO<sub>2</sub> eq/MWh. Flywheel energy storage systems are feasible for short-duration applications, which are crucial for the reliability of an electrical

grid with large renewable energy penetration.

How can flywheels be more competitive to batteries?

The use of new materials and compact designs will increase the specific energy and energy density to make flywheels more competitive to batteries. Other opportunities are new applications in energy harvest, hybrid energy systems, and flywheel's secondary functionality apart from energy storage.

Do flywheel energy storage systems have environmental and energy performance indicators?

Environmental and energy performance indicators are an important part of the investment decisions prior to the deployment of utility-scale flywheel energy storage systems. There are no published studies on the environmental footprints of FESSs that investigate all the life cycle stages from cradle-to-grave.

What is a 30 MW flywheel grid system?

A 30 MW flywheel grid system started operating in China in 2024. Flywheels may be used to store energy generated by wind turbines during off-peak periods or during high wind speeds. In 2010, Beacon Power began testing of their Smart Energy 25 (Gen 4) flywheel energy storage system at a wind farm in Tehachapi, California.

Is a flywheel a flying wheel?

A flywheel is not a flying wheel, though if things go sideways, it's possible to find flywheels mid-air. Flywheels are devices used to store energy and release it after smoothing eventual oscillations received during the charging process. Flywheels store energy in the form of rotational energy.

## Energy storage flywheel weight

---



### What is Flywheel Energy Storage? , Linqip

Electric energy is supplied into flywheel energy storage systems (FESS) and stored as kinetic energy. Kinetic energy is defined as the "energy of motion," in this situation, the motion of a rotating mass ...

### Flywheel Energy Storage Systems (FESS)

Flywheel energy storage systems (FESS) use electric energy input which is stored in the form of kinetic energy. Kinetic energy can be described as "energy of motion," in this case the motion of a spinning mass, called a ...



### Flywheel Energy Dynamics: Calculation of Stored Energy and ...

The energy stored in a flywheel is given by the formula  $E = (1/2) * W * (D/2)^2 * (N/60)^2$ , where W is the weight of the flywheel, D is the diameter of the flywheel, and N is the ...

### Microsoft Word

The flywheel operates at a peak speed of 35,000 rpm, pulling power down to a minimum speed of 20,000 rpm. The tests conducted on the system have verified expected peak power output, ...



### [Flywheel Energy Storage Calculator](#)

Our flywheel energy storage calculator allows you to compute all the possible parameters of a flywheel energy storage system. Select the desired units, and fill in the fields related to the quantities you know: we will immediately ...



## Flywheels

The kinetic energy stored in flywheels - the moment of inertia. A flywheel can be used to smooth energy fluctuations and make the energy flow intermittent operating machine more uniform. ...

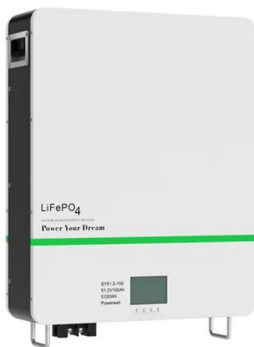


## Flywheel Energy Storage System Basics

However on the downside, flywheel energy storage systems have low energy storage density per unit of weight and volume. Beacon Power operates a 25 kilowatt / 100 ...

## Introducing the Key Energy MPowerTank - Key ...

The Key Energy MPowerTank combines a long duration flywheel from Amber Kinetics, with our Australian engineered, UTS validated above-ground enclosure, and in-house specially developed SENSSA TM Energy ...



## Flywheel Energy Storage Systems and their Applications: A ...

Flywheel energy storage systems are suitable and economical when frequent charge and discharge cycles are required. Furthermore, flywheel batteries have high power density and a ...

## The Flywheel Energy Storage System: A Conceptual Study, ...

Flywheel Energy Storage (FES) system is an electromechanical storage system in which energy is stored in the kinetic energy of a rotating mass. Flywheel systems are composed of various ...



## Energy and environmental footprints of flywheels for utility-scale

In this study, an engineering principles-based model was developed to size the components and to determine the net energy ratio and life cycle greenhouse gas emissions of ...

Support Customized Product



## Energy and environmental footprints of flywheels for utility-scale

The net energy ratio is a ratio of total energy output to the total non-renewable energy input over the life cycle of a system. Steel rotor and composite rotor flywheel energy ...



## [Flywheel Energy Storage Calculator](#)

Flywheel energy storage systems work by converting electrical energy into mechanical energy and storing it in a spinning flywheel. When the stored energy needs to be released, the ...

## Flywheel as Energy Storage Device, Calculations ...

The technique of energy storage using Flywheel is thousands of years old. Just take an example of Potter's wheel and think what it does. It just uses the inertia of wheel and keeps on rotating with minimum effort. The concept ...





## Understanding Flywheel Energy Storage: Does High-Speed ...

If one divides the stored energy by the weight, one obtains a gravimetric energy density expressed in units of energy storage per unit mass such as watt-seconds per pound or per ...

## A review of flywheel energy storage systems: state of the art and

The lithium-ion battery has a high energy density, lower cost per energy capacity but much less power density, and high cost per power capacity. This explains its popularity in ...



## Flywheel Energy Storage Calculator (Energy Only)

What is a Flywheel Energy Storage Calculator?  
 Definition: This calculator computes the rotational energy (E) stored in a flywheel, based on its mass, radius, shape, and angular velocity.

## Flywheel Energy Storage Calculator (Energy Only)

A: Flywheel energy storage involves storing energy in the form of rotational kinetic energy in a spinning flywheel, which can be released as needed for various applications.



## Critical Review of Flywheel Energy Storage ...

This review presents a detailed summary of the latest technologies used in flywheel energy storage systems (FESS). This paper covers the types of technologies and systems employed within FESS, the ...



## A comprehensive review of Flywheel Energy Storage System ...

Energy storage systems (ESSs) play a very important role in recent years. Flywheel is one of the oldest storage energy devices and it has several benefits. Flywheel ...



## Industrial Solutions Flywheel UPS Systems, 50-1000 kVA

How the Flywheel Works The flywheel energy storage system works like a dynamic battery that stores energy by spinning a mass around an axis. Electrical input spins the flywheel hub up to ...

## Mechanical electricity storage

Flywheel energy storage systems (FESS) use electric energy input which is stored in the form of kinetic energy. Kinetic energy can be described as "energy of motion," in this case the motion of a spinning mass, called a ...



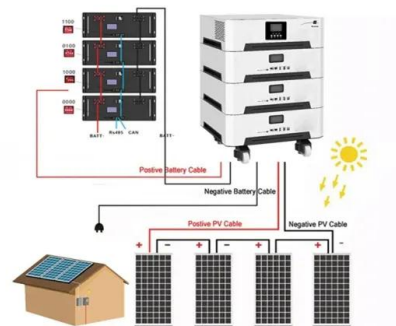


## Technology: Flywheel Energy Storage

Summary of the storage process Flywheel Energy Storage Systems (FESS) rely on a mechanical working principle: An electric motor is used to spin a rotor of high inertia up to 20,000-50,000 ...

## **A review of flywheel energy storage systems: state of the art ...**

The lithium-ion battery has a high energy density, lower cost per energy capacity but much less power density, and high cost per power capacity. This explains its popularity in ...



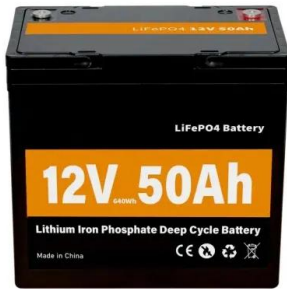
## **World's largest flywheel energy storage system ...**

China's massive 30-megawatt (MW) flywheel energy storage plant, the Dinglun power station, is now connected to the grid, making it the largest operational flywheel energy storage facility ever built.

## Amber Kinetics M32

The Amber Kinetics M32 (8kW,32kWh) is the first commercialized four-hour discharge duration Kinetic Energy Storage System (KESS) powered by advanced flywheel technology that stores ...



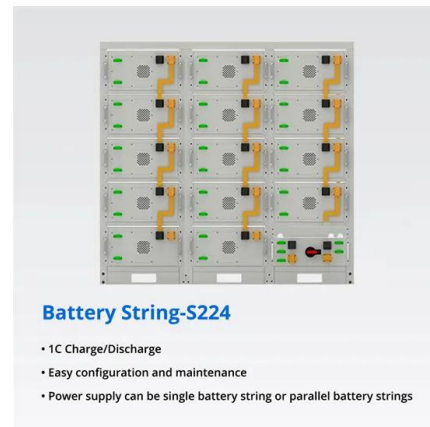


## Flywheel storage , Energy Storage for Power Systems

The energy capacity of flywheels, with respect to their weight and cost, has to date been very low, and their utilisation was mainly linked to the unique possibility of being able ...

### FLYWHEEL POWER GENERATION AND ...

Each flywheel with this specification of 13400 kg weight and 3 m in diameter at 800 rpm will store 30 KW of energy in the torus ring design where weight is maximum on the periphery of the ...



## Flywheel Energy Storage for Grid and Industrial ...

Flywheel Energy Storage Nova Spin Our flywheel energy storage device is built to meet the needs of utility grid operators and C& I buildings.

## Contact Us

For catalog requests, pricing, or partnerships, please visit:  
<https://www.apartamenty-teneryfa.com.pl>